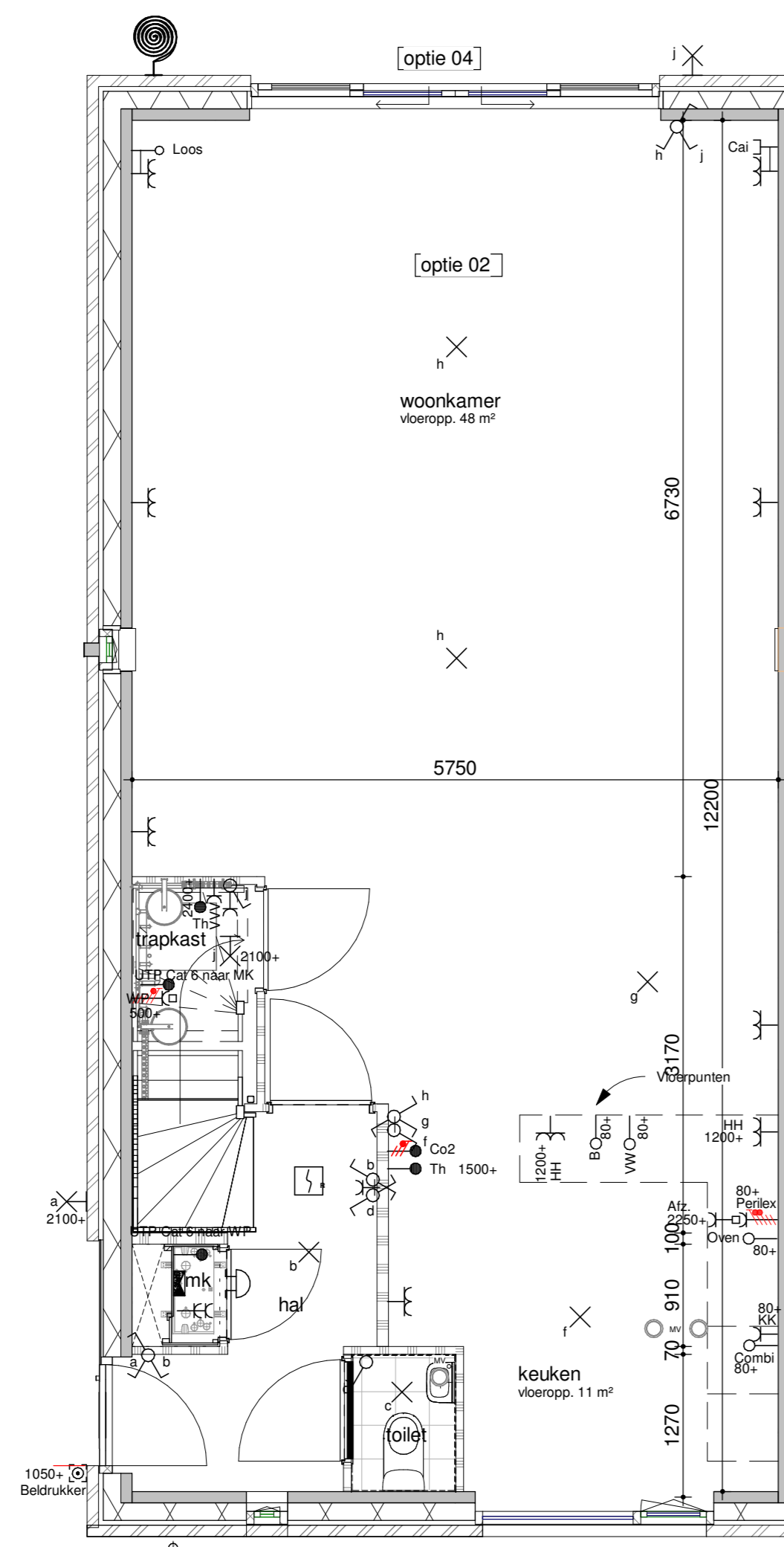
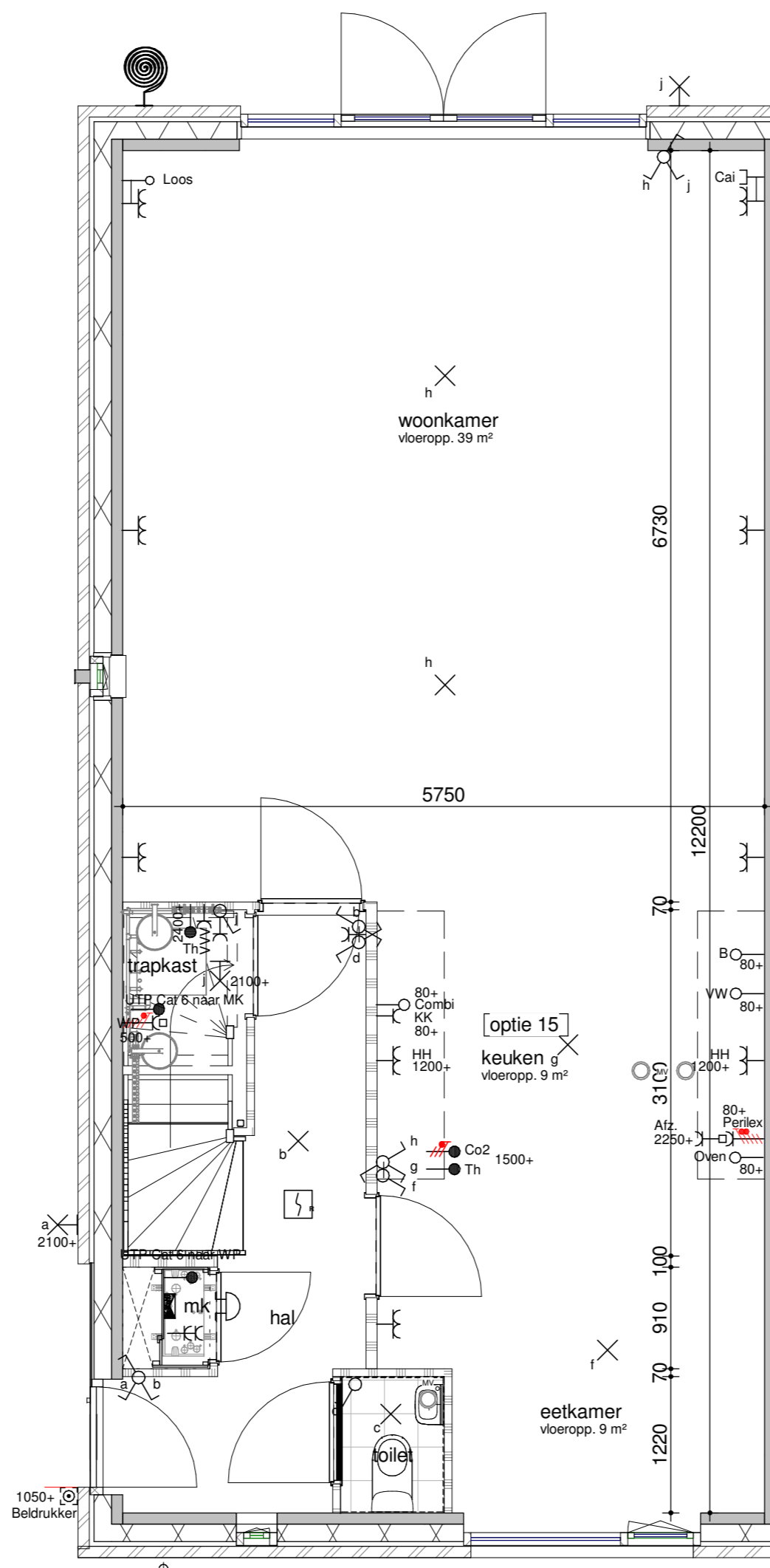


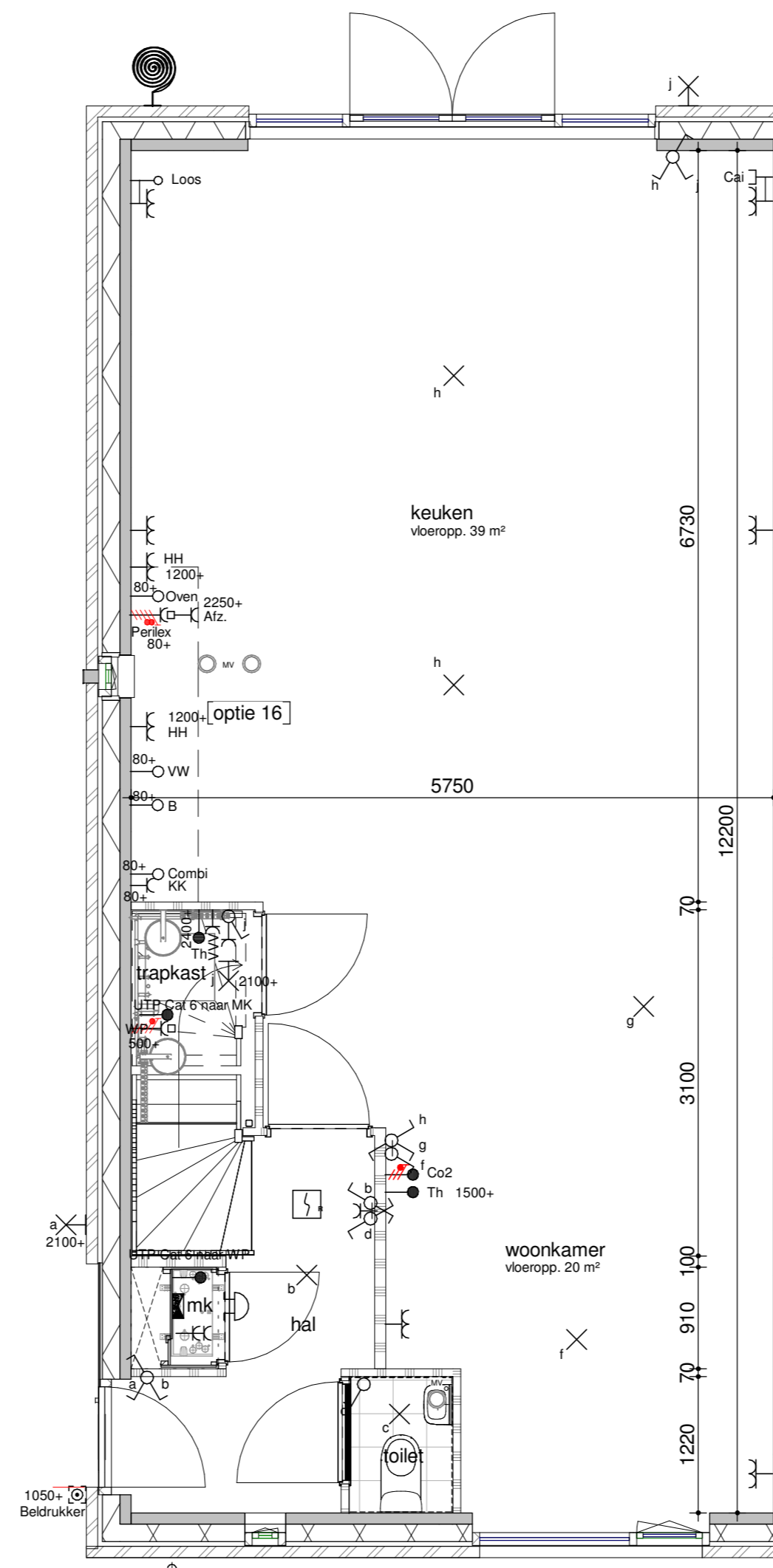
begane grond - optie 1200



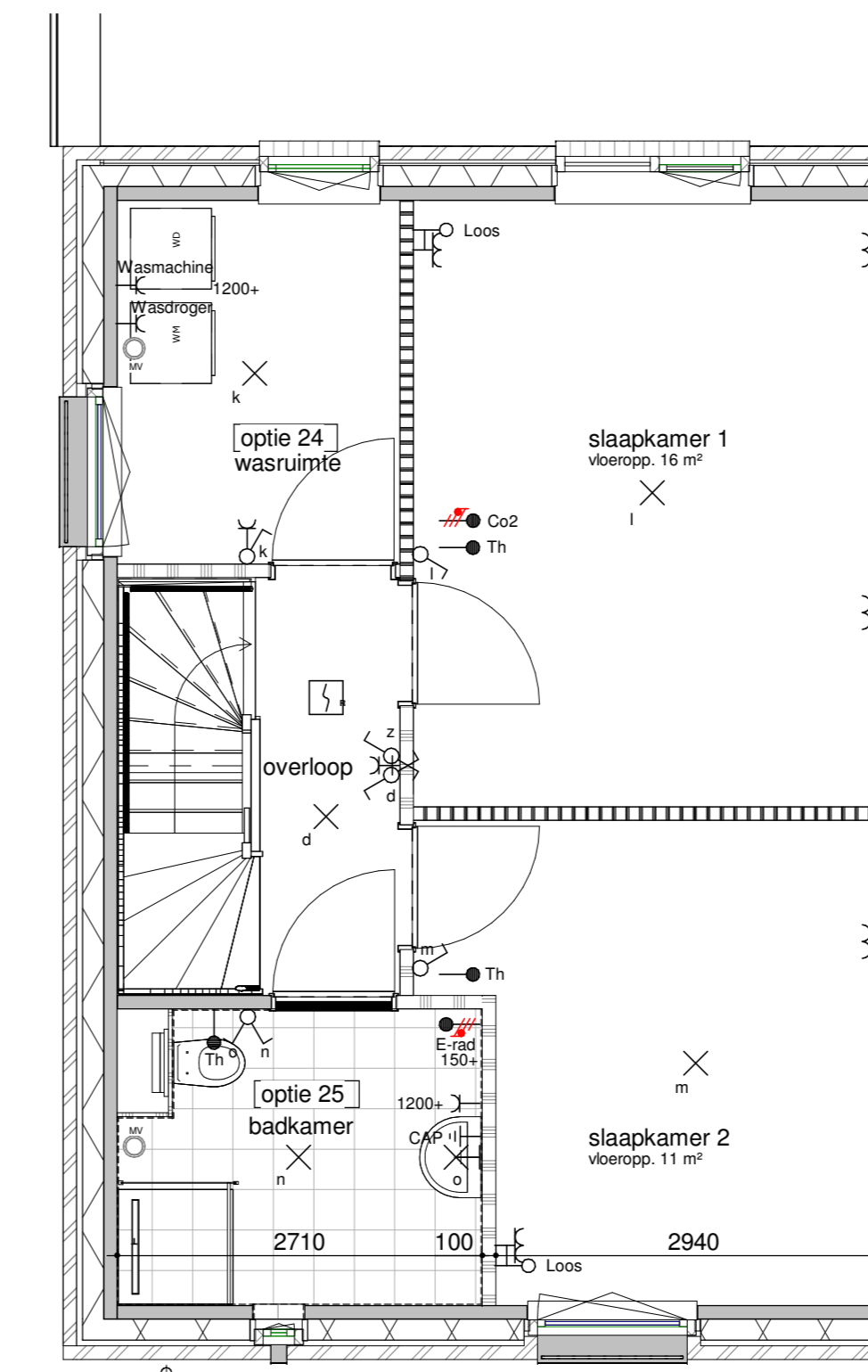
begane grond - optie 2400



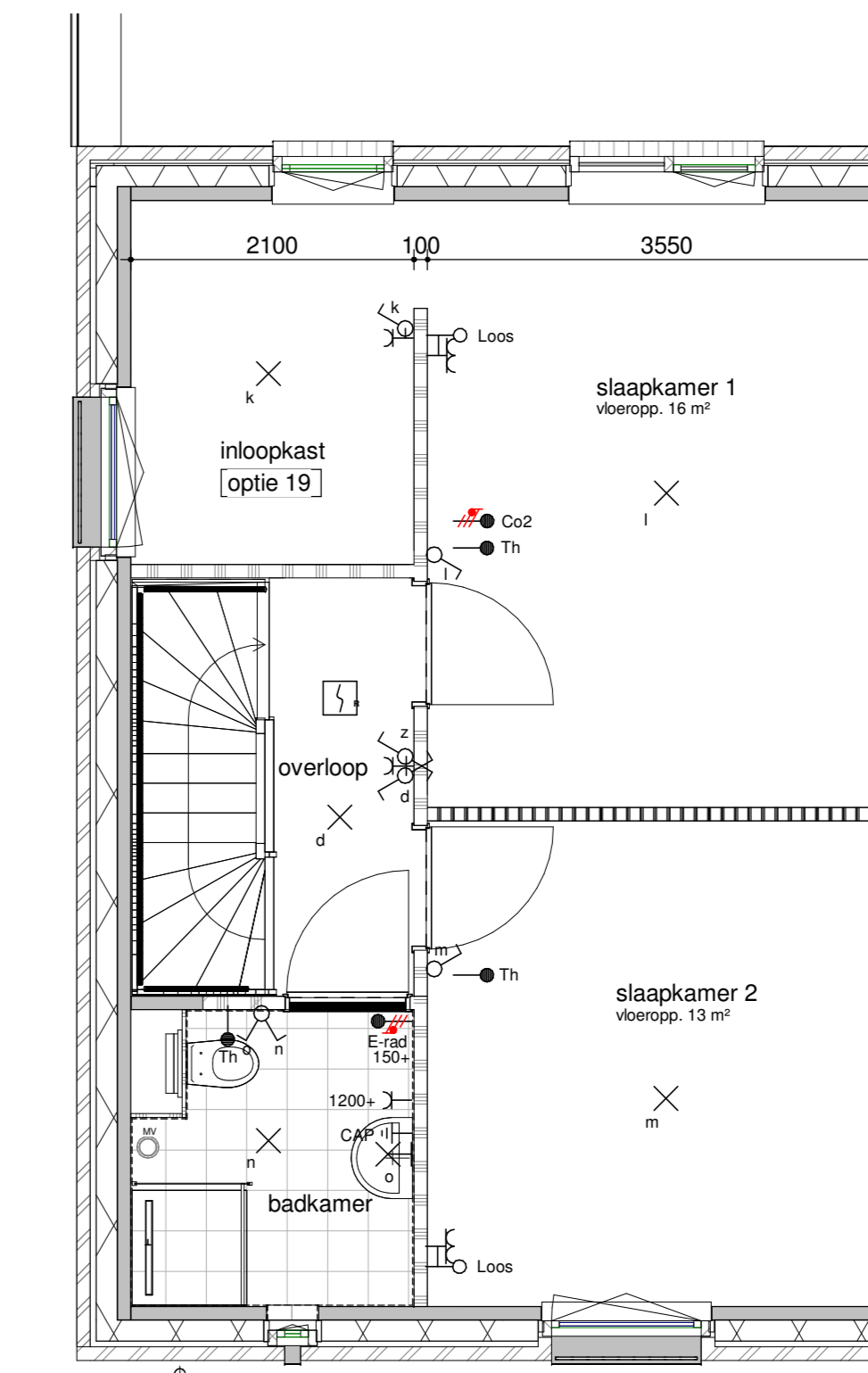
begane grond - optie 2400



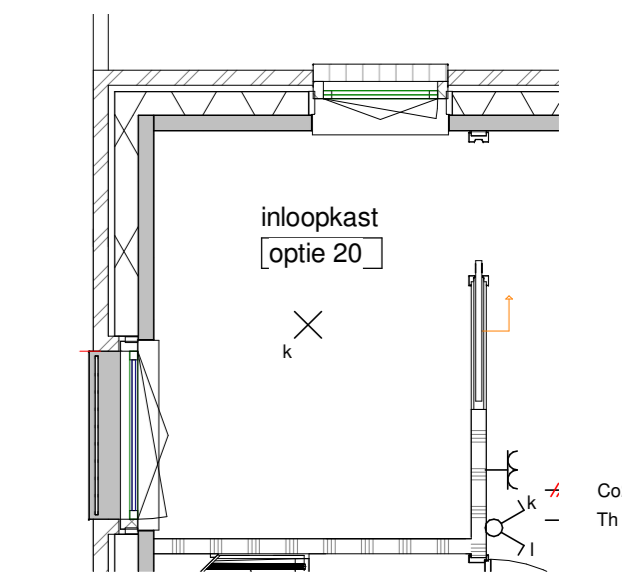
begane grond - optie 2400



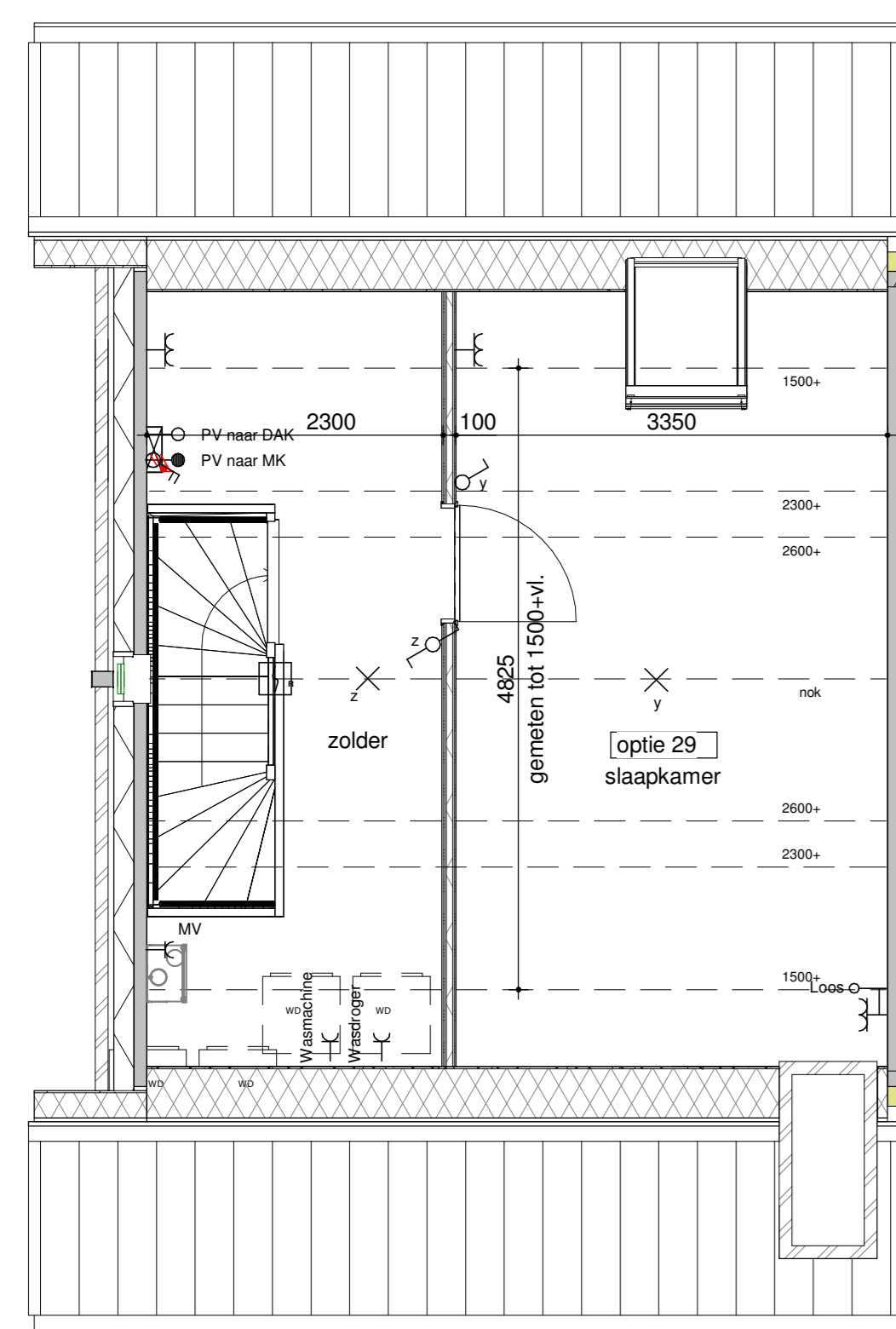
eerste verdieping - vergrote badkamer



eerste verdieping - inloopkast



eerste verdieping - inloopkast met schuifdeur



tweede verdieping - zolderindeling



achtergevel - 1200/2400 uitbouw + schuifpui

Humblé Martens & Willems Architecten
www.humblemartenswillems.nl

Bedaux de Brouwer Architecten
www.bedauxdebrouwer.nl

Weusten Liedenbaum Architecten
www.weustenliedenbaum.nl

Buitenoord - Wageningen, Fase 2
optieblad 6000x10600 (I)

Bloknr.: 12E
Bwnr.: 18-2019(F2)

Werknummer:
18-2019(F2)

datum: 01-06-2020
wijziging:

tek.nr.: BA/VK.214
schaal: 1:50/1:100
formaat: A0

Trebbe Wonen
Postbus 250
8000 AG Zwolle

telefoon 088 259 00 00



definitief