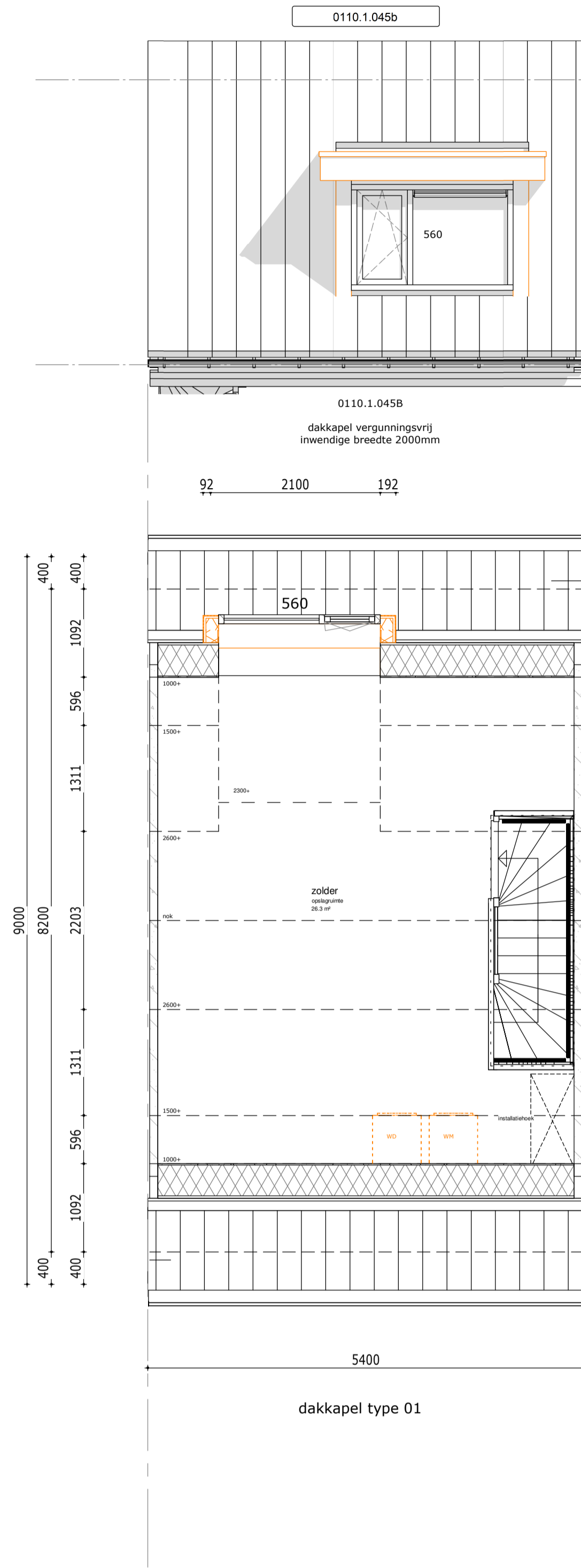
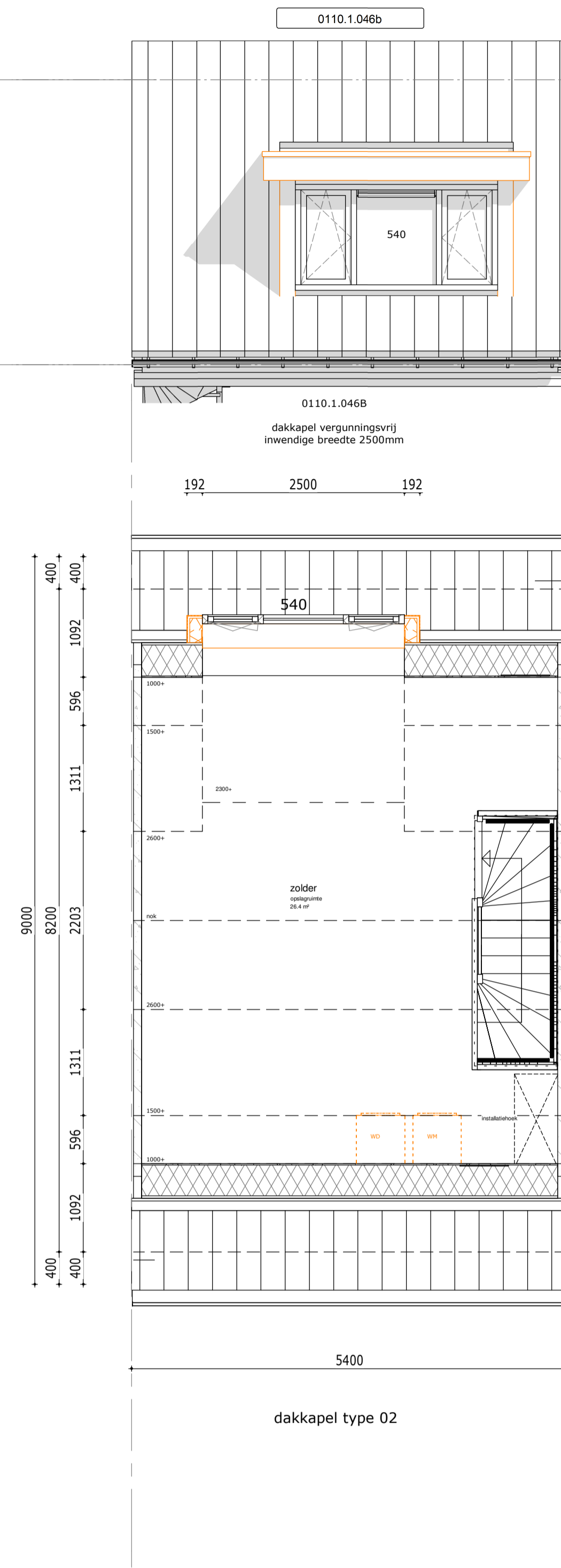


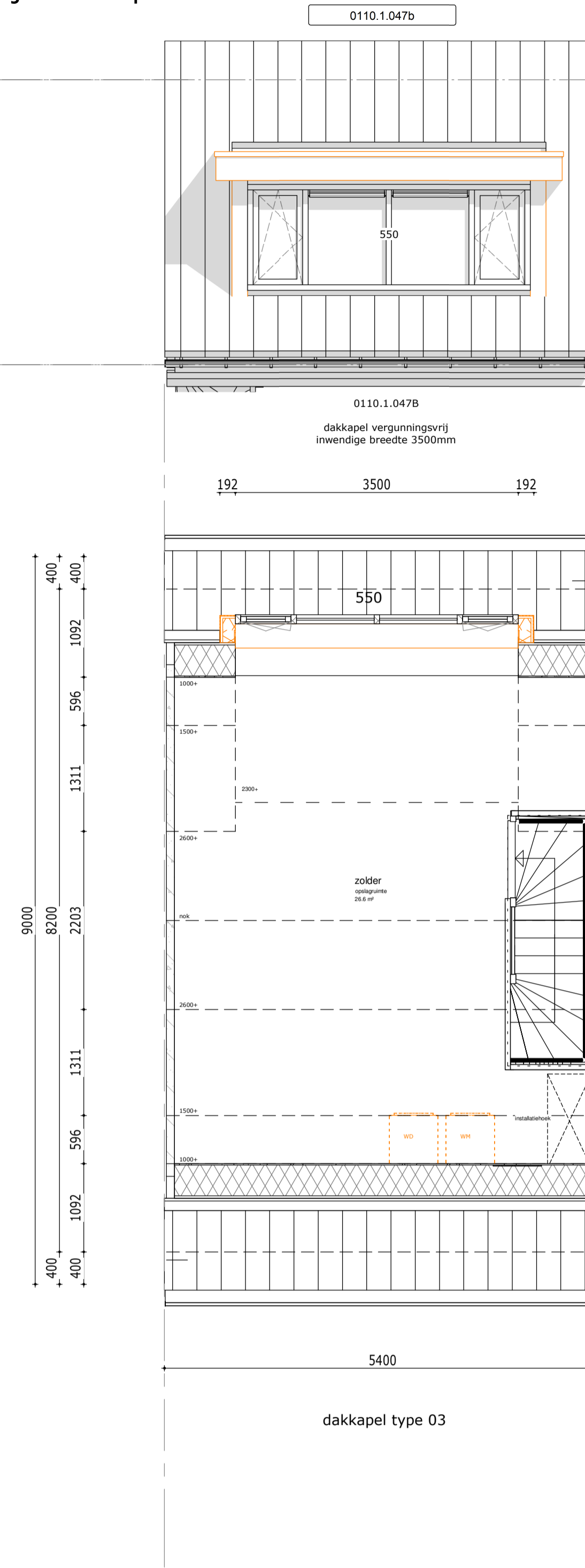
vergunningsvrije dakkapel



dakkapel type 01



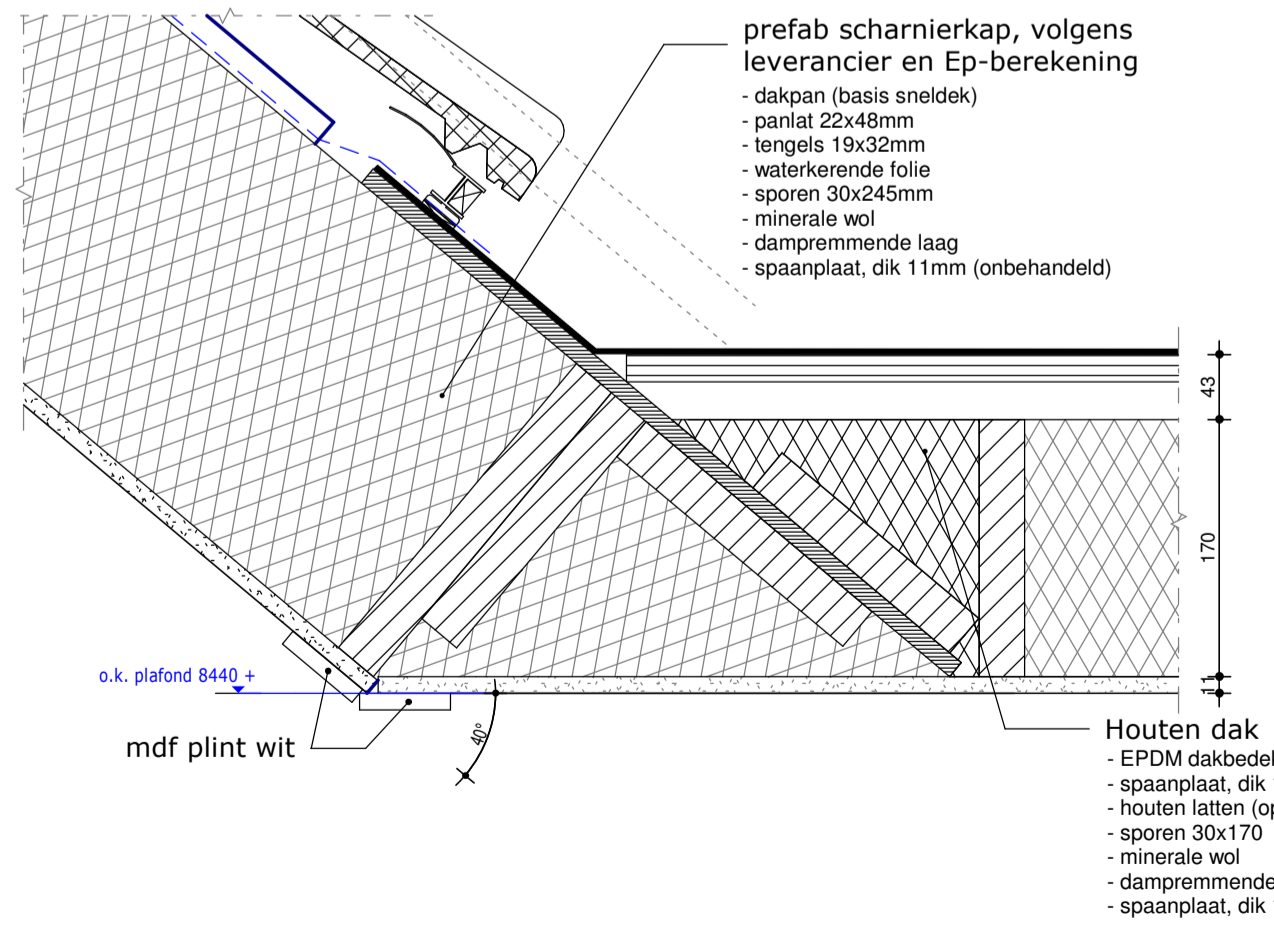
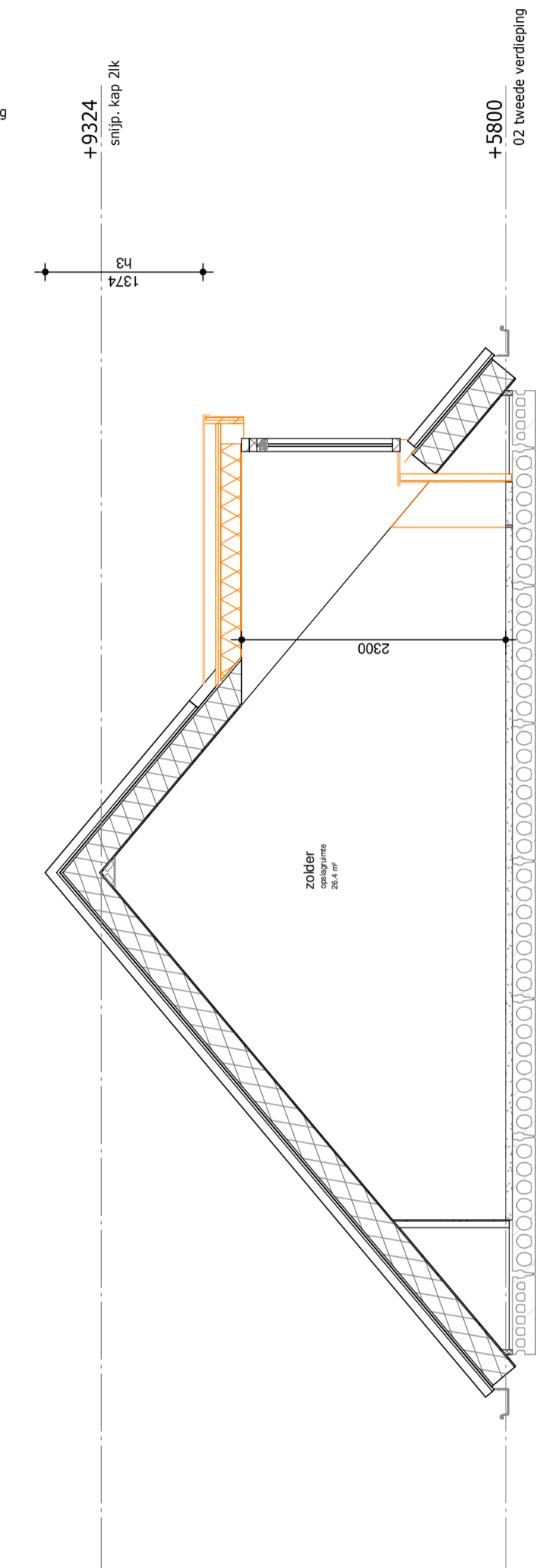
dakkapel type 02



dakkapel type 03

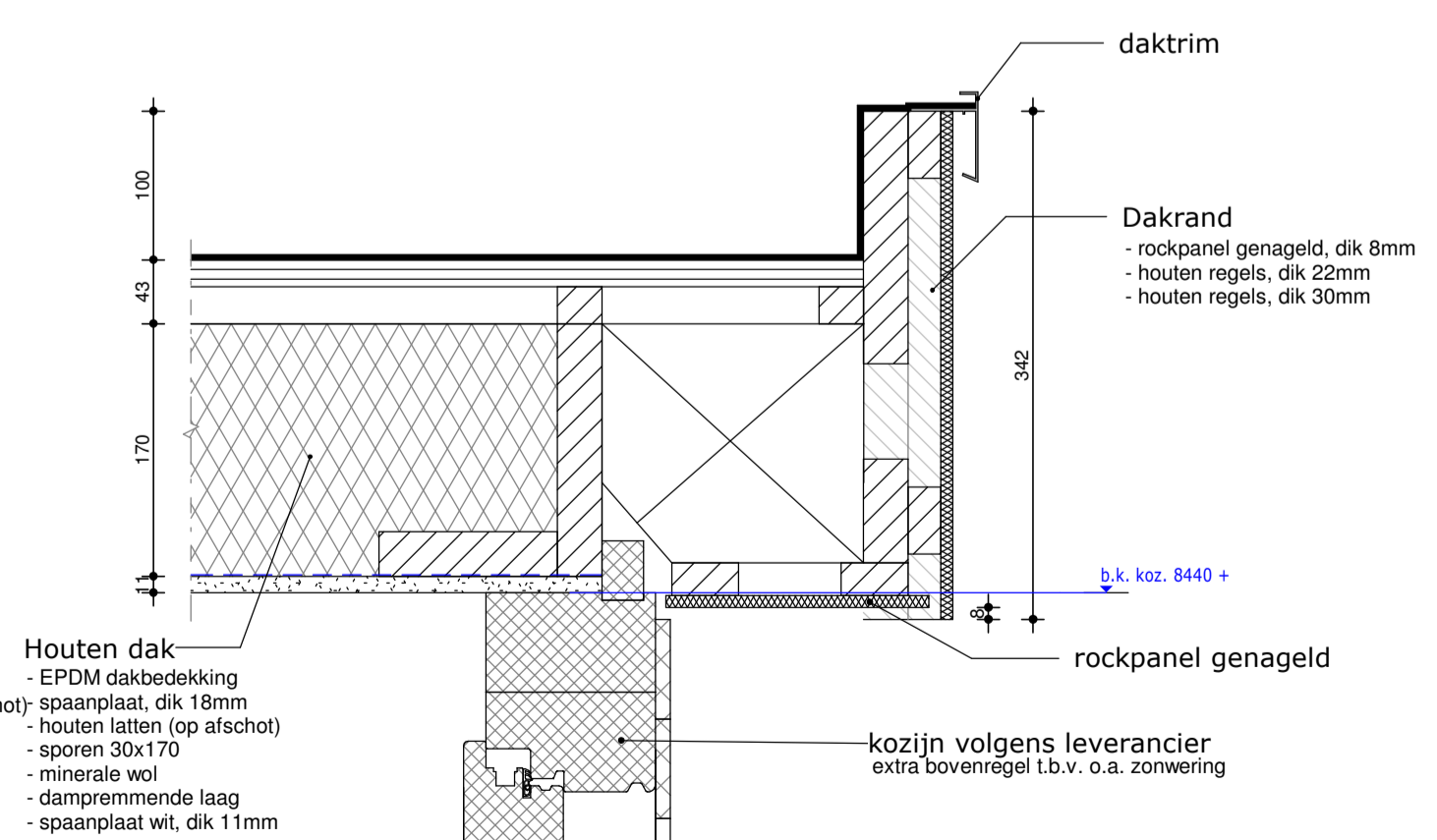
+9324
snijp. kap Zik

+5800
02 tweede verdieping



prefab scharnierkap, volgens leverancier en Ep-berekening

- dakpan (basis sneldek)
- panflat 22x48mm
- tangelis 19x32mm
- waterkerende folie
- sporen 30x245mm
- minerale wol
- dampremmende laag
- spaanplaat, dik 11mm (onbehandeld)

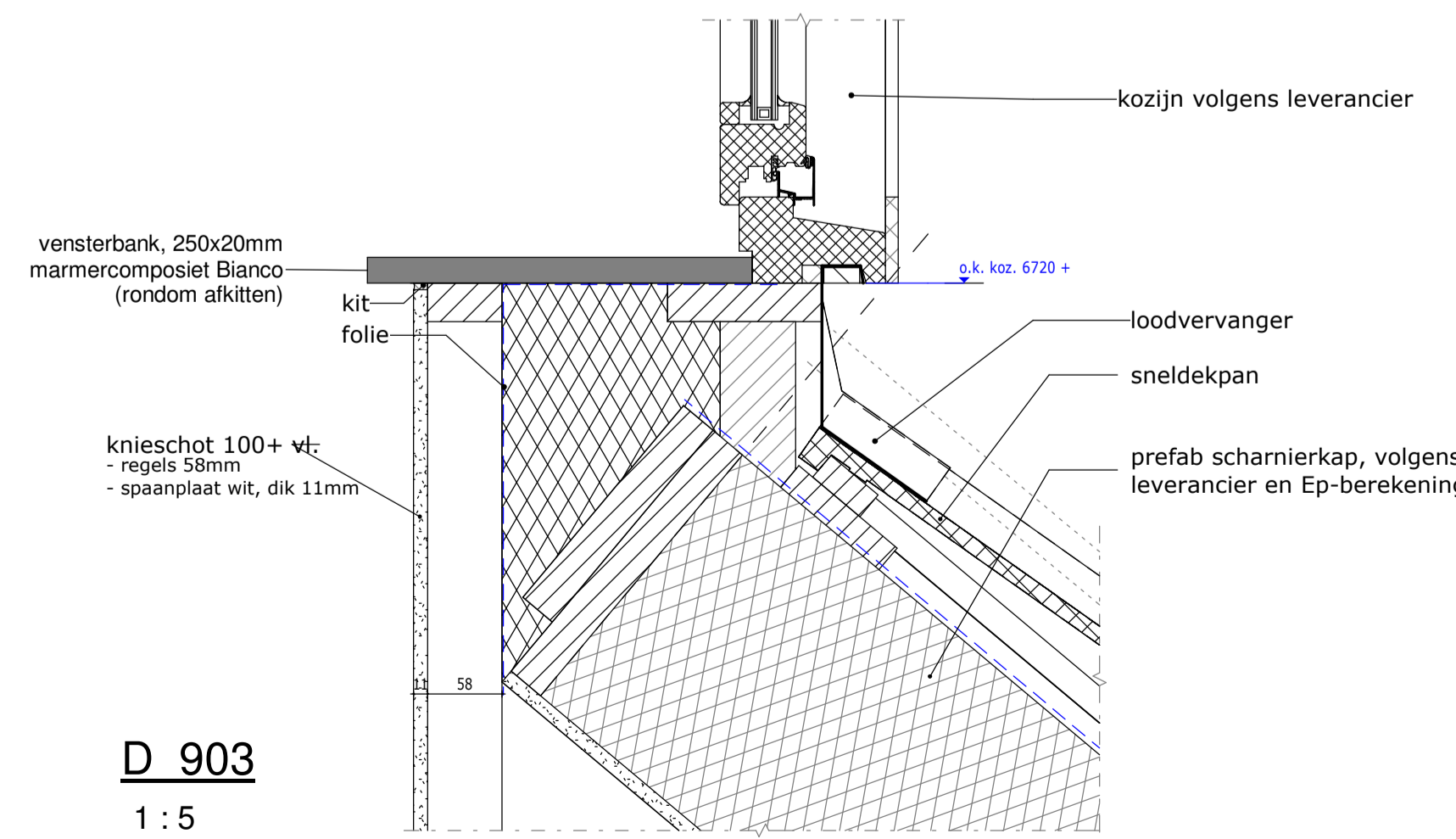


Houten dak

- EPDM dakbedekking
- spaanplaat, dik 18mm
- houten latten (op afschot)
- sporen 30x170
- minerale wol
- dampremmende laag
- spaanplaat, dik 11mm

D 905
1 : 5

D 904
1 : 5



D 903
1 : 5

Humblé Martens & Willems Architecten
www.humblemartenswillems.nl

Bedaux de Brouwer Architecten
www.bedauxdebrouwer.nl

Weusten Liedenbaum Architecten
www.weustenliedenbaum.nl

Rijwoning
Dakkapellen blad 2 (A1)

datum: 01-06-2020
wijziging:

getekend: WLA

Trebbe Wonen
Postbus 4
7500 AA Enschede

tek.nr.:
BA/VK.329
schaal: 1:50/1:5
formaat: A1

