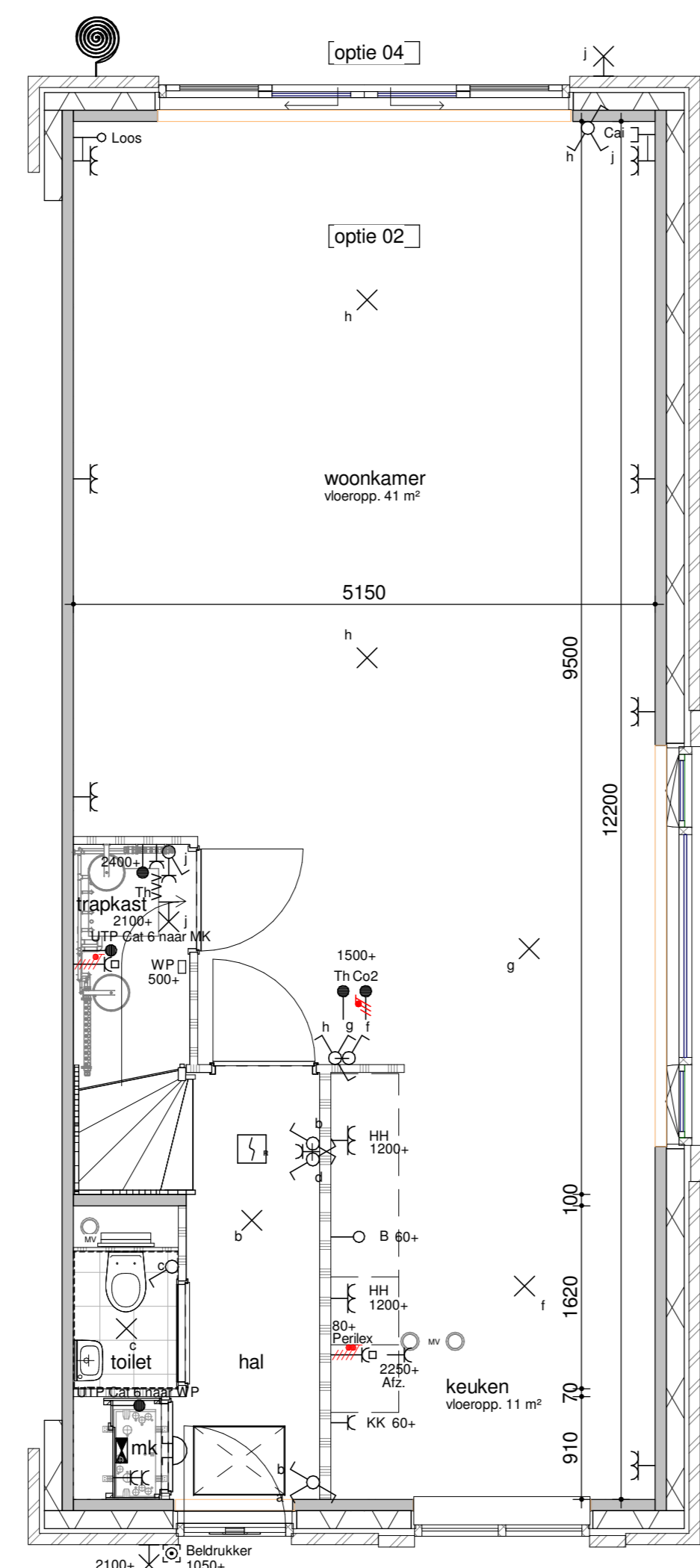
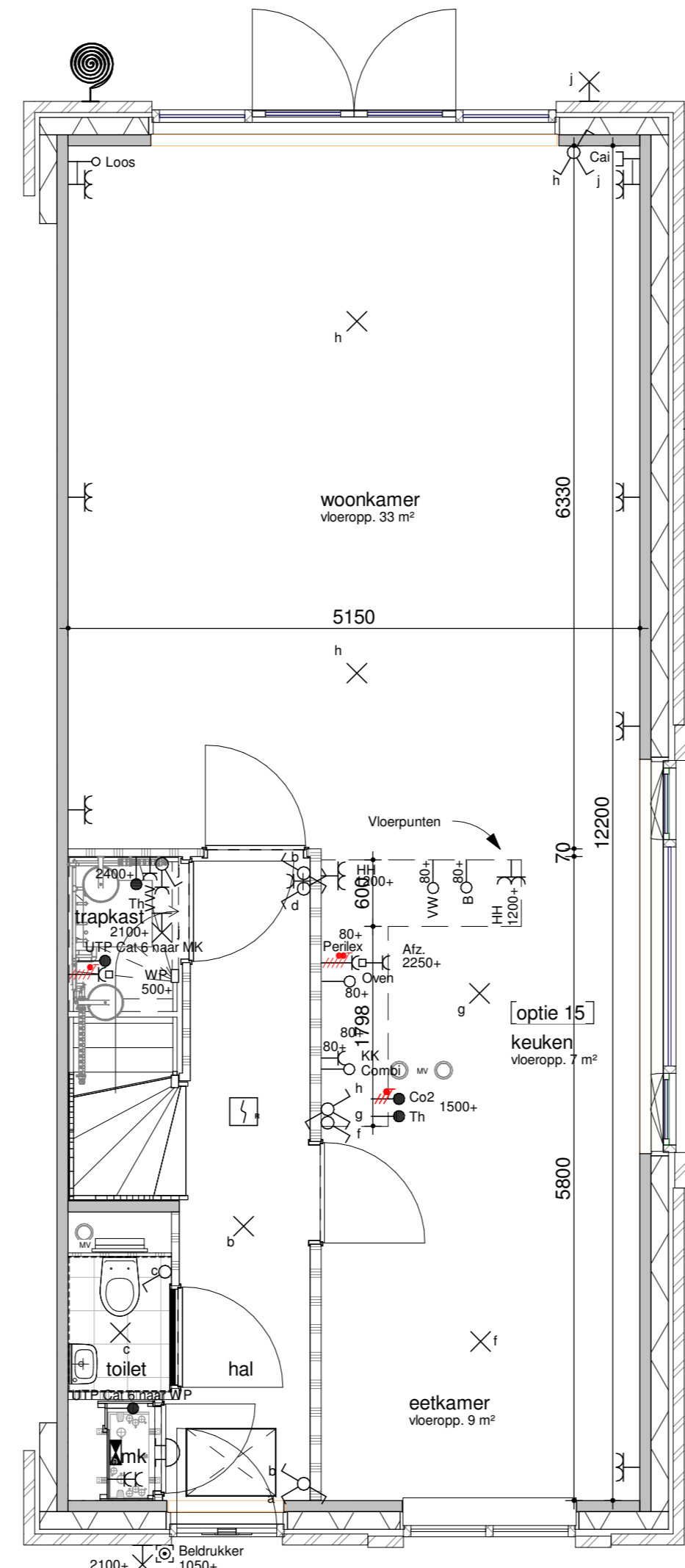


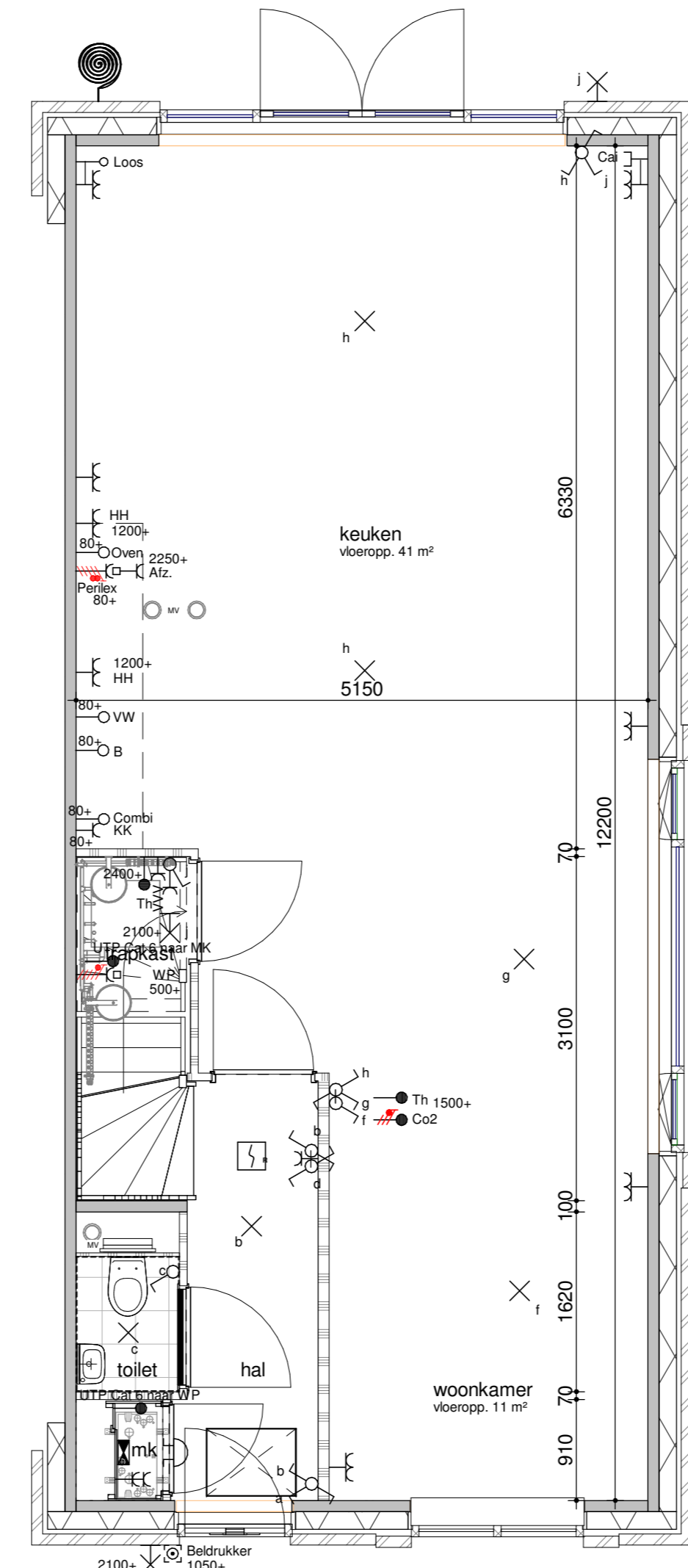
begane grond - optie 1200  
1:50



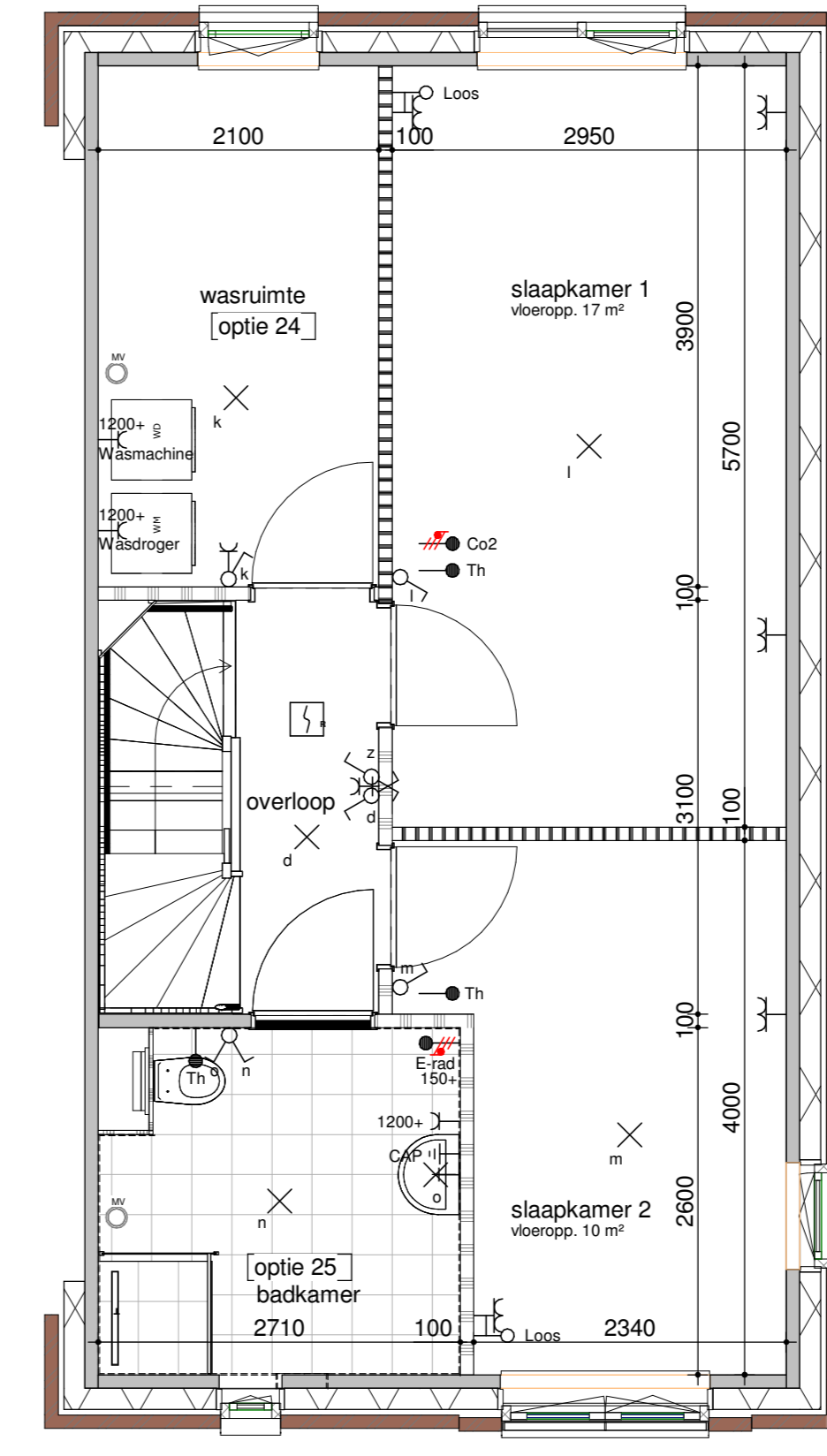
begane grond - optie 2400  
1:50



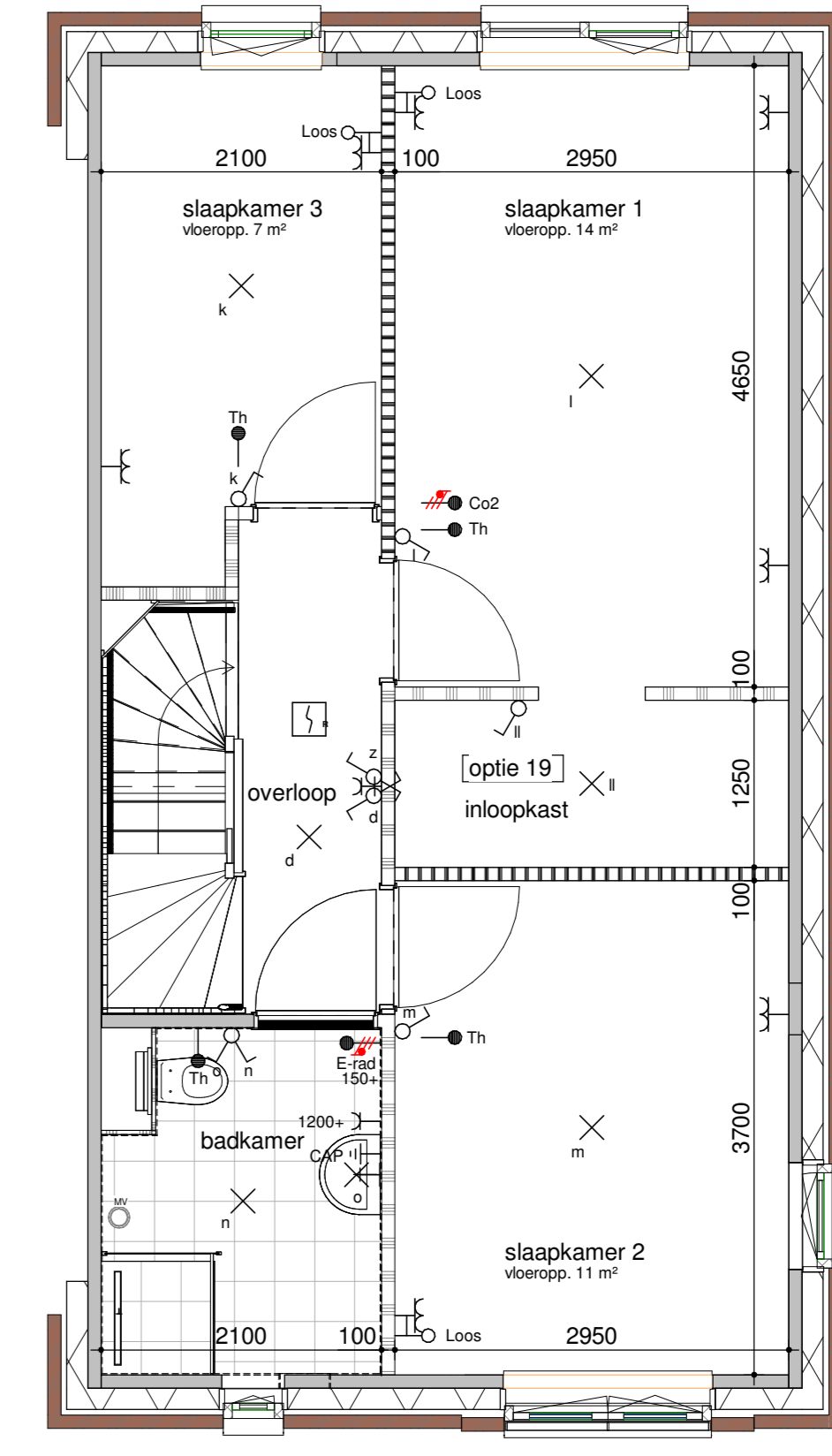
begane grond - optie middenkeuken  
1:50



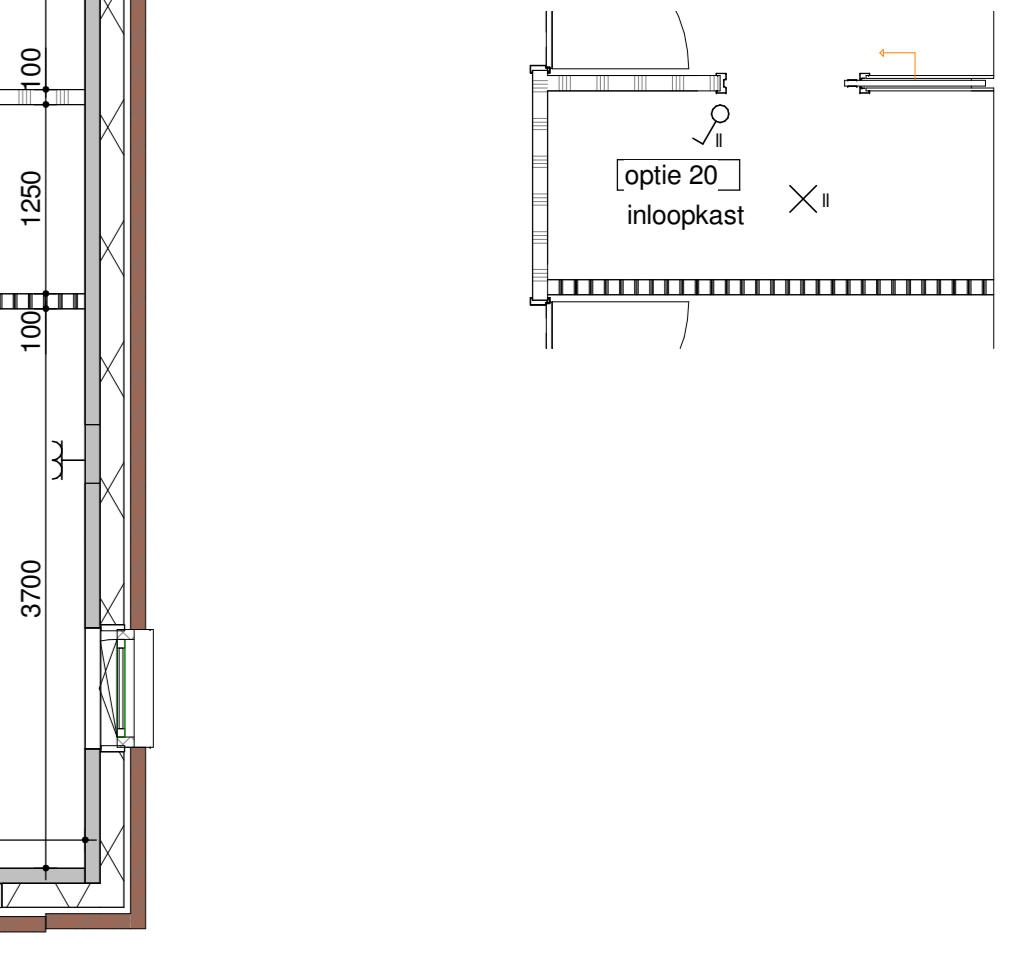
begane grond - optie keuken achter  
1:50



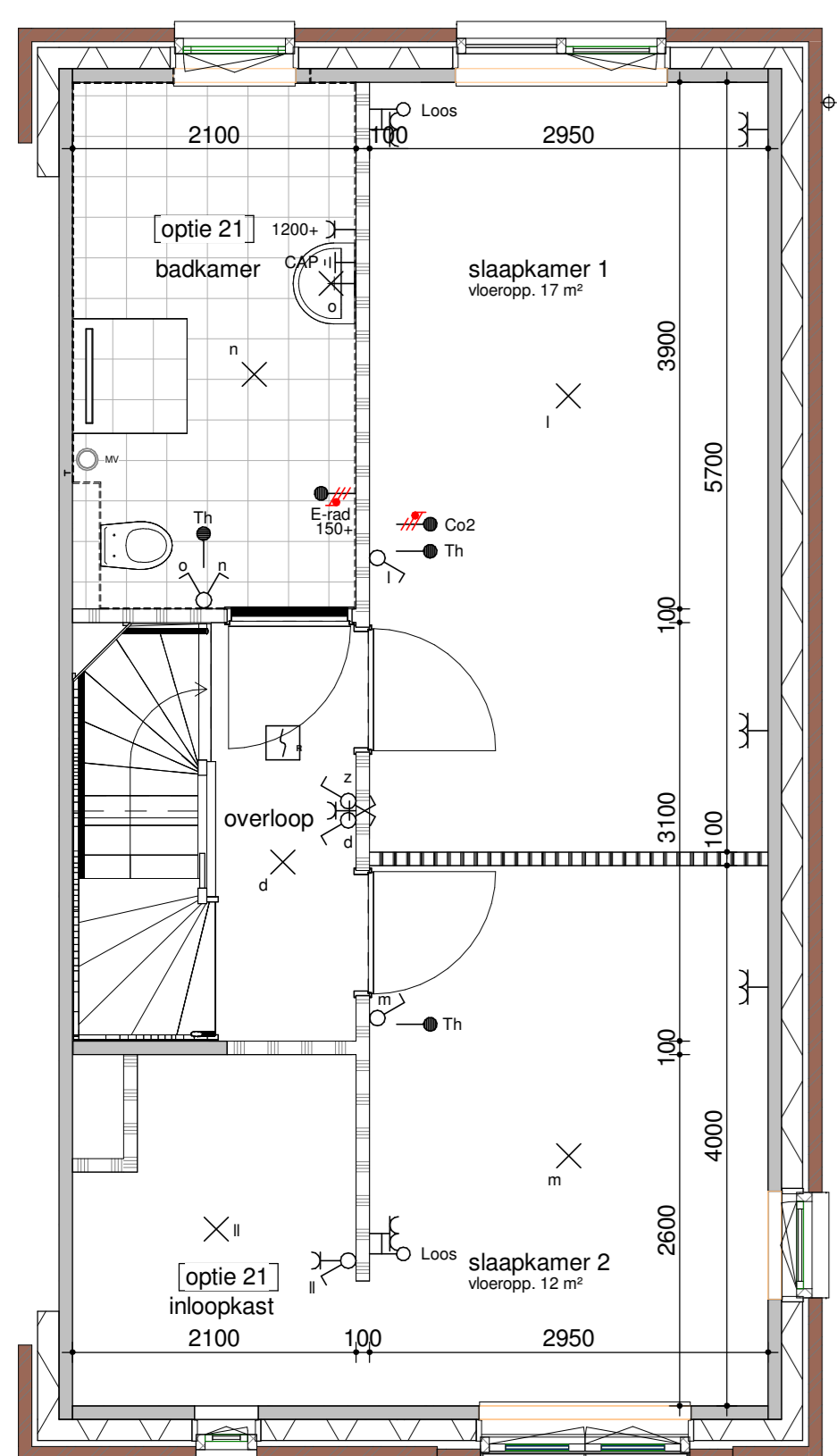
eerste verdieping - vergrote badkamer  
1:50



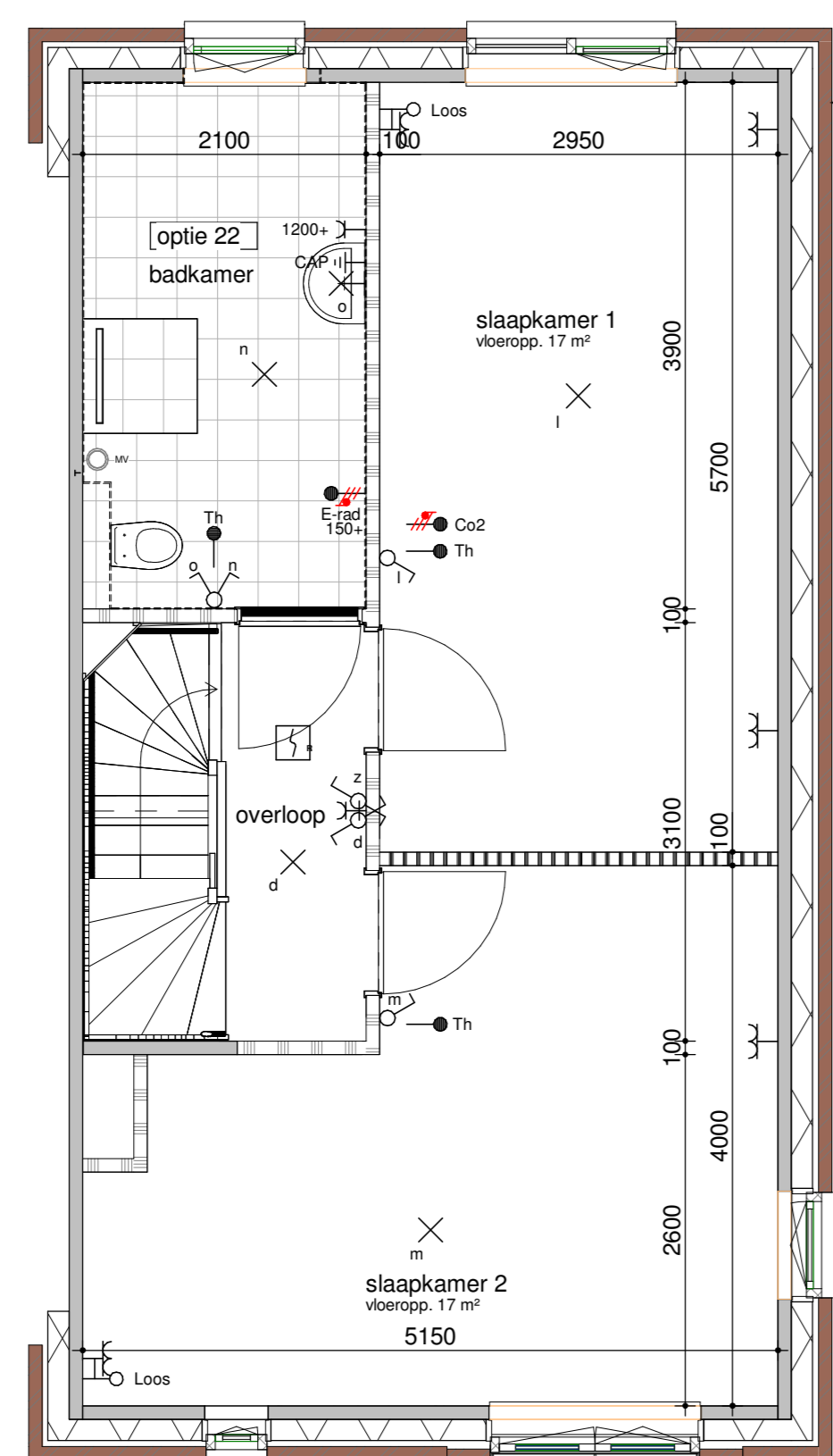
eerste verdieping - inloopkast  
1:50



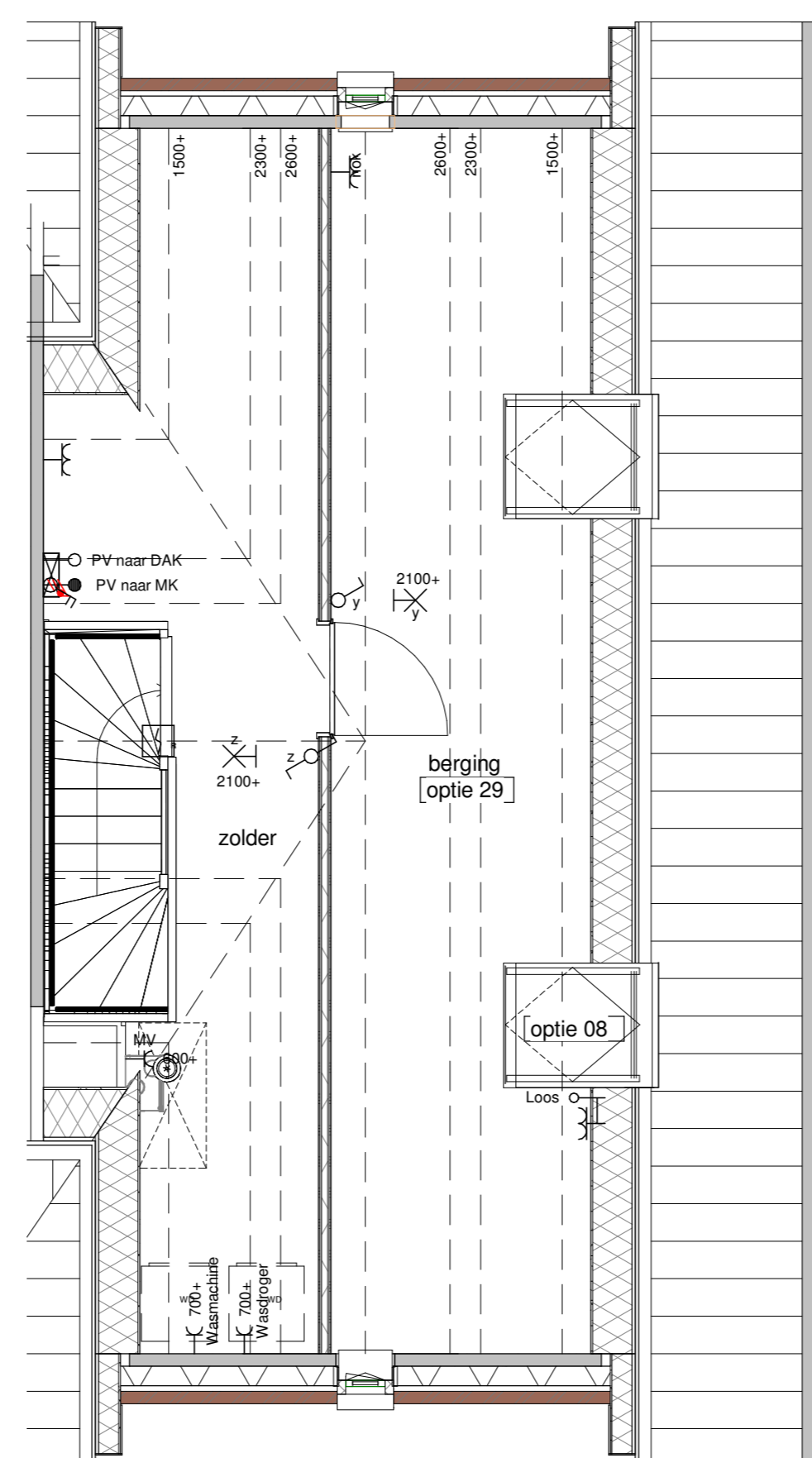
eerste verdieping - inloopkast met schuifdeur  
1:50



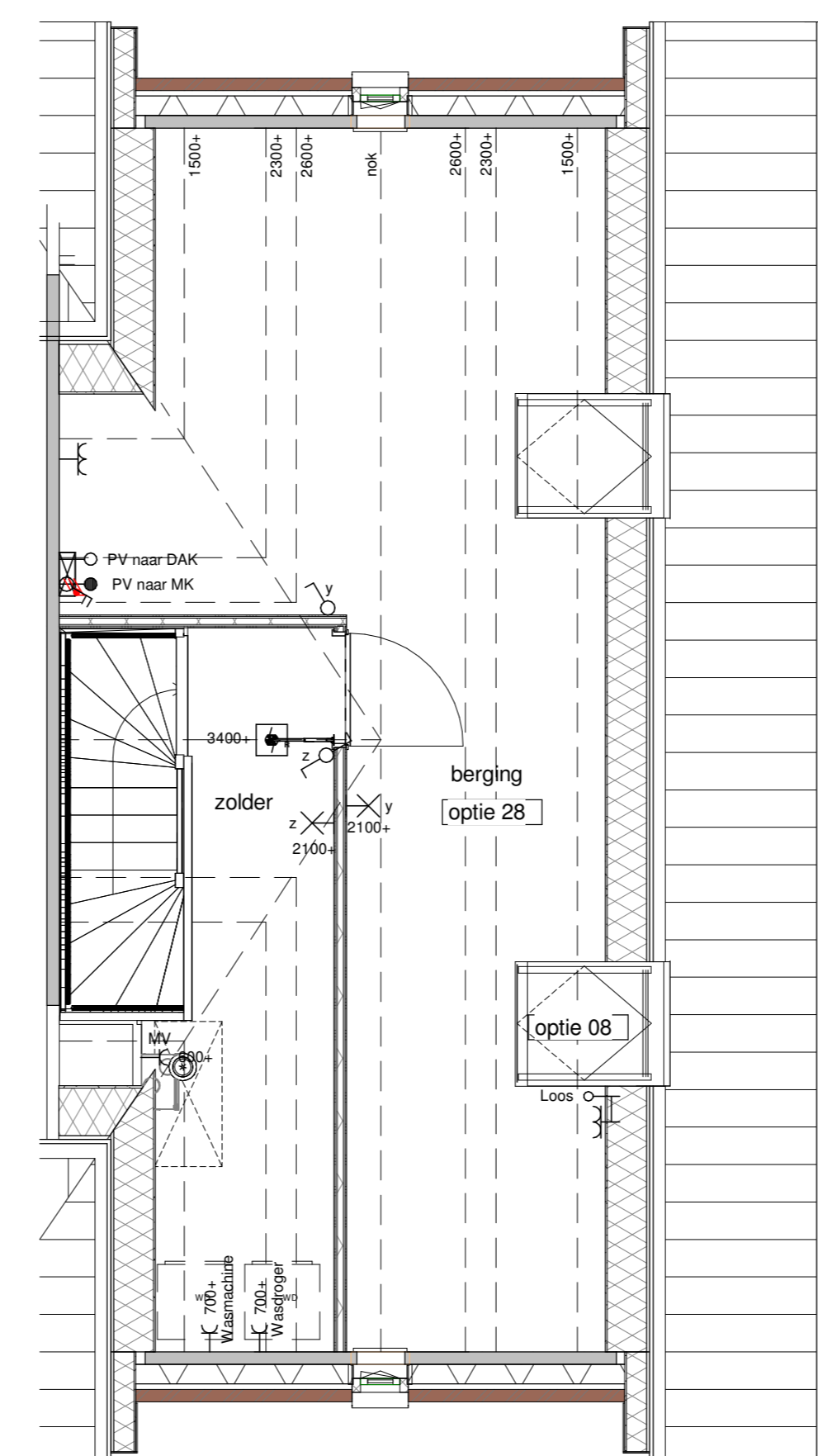
eerste verdieping - badkamer achter  
1:50



eerste verdieping - badkamer achter  
1:50



tweede verdieping - zolderindeling  
1:50



tweede verdieping - zolder L-indeling  
1:50



achtergevel - 1200 uitbouw + dubbele deur  
1:100



achtergevel - 2400 uitbouw + schuifpui  
1:100

Humblé Martens & Willems Architecten  
www.humblemartenswillems.nl

Bedaux de Brouwer Architecten  
www.bedauxdebrouwer.nl

Weusten Liedenbaum Architecten  
www.weustenliedenbaum.nl

Buitenoord - Wageningen, Fase 2  
optieblad 5400x10600

datum: 01-06-2020  
wijziging:

getekend: WLA

Trebbe Wonen  
Postbus 250  
8000 AG Zwolle

Bloknr.: 6C  
Bwnr.:  
telefoon 088 259 00 00

Werknummer:  
18-2019(F2)  
tek.nr.:  
BA/VK.318  
schaal: 1:50/1:100  
formaat: A0



definitief