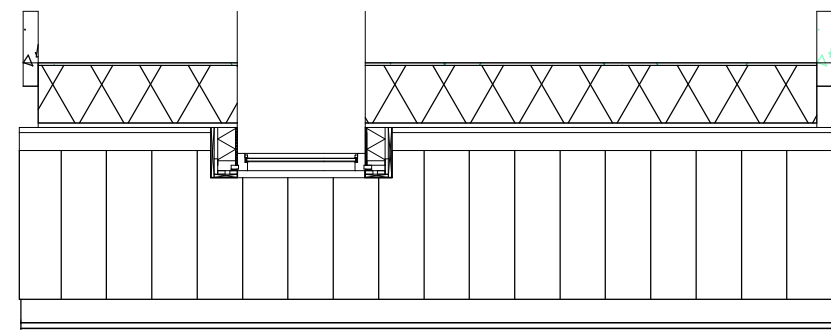
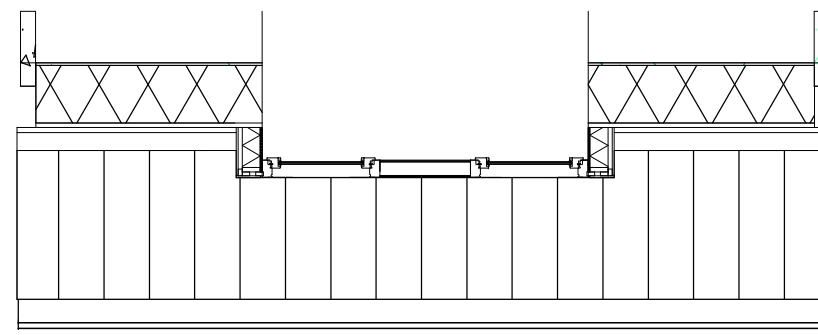


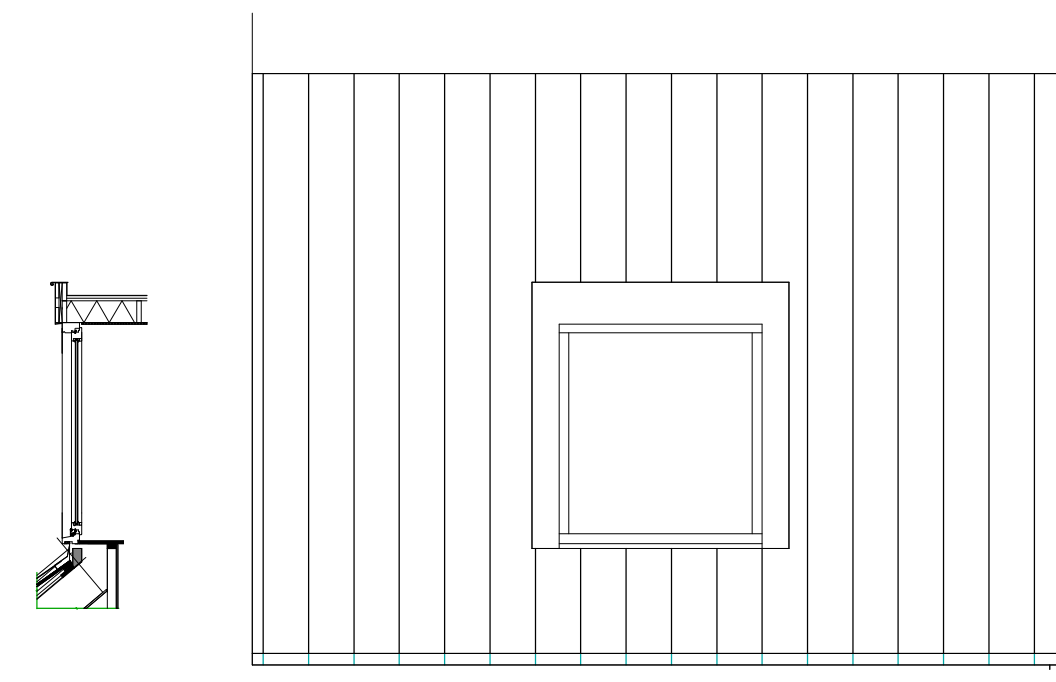
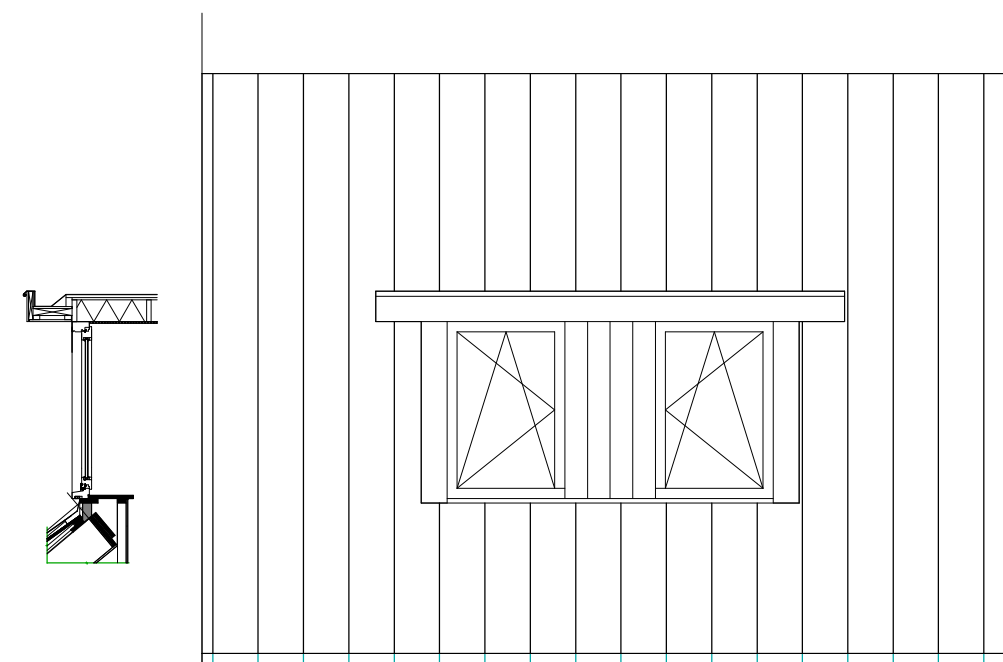
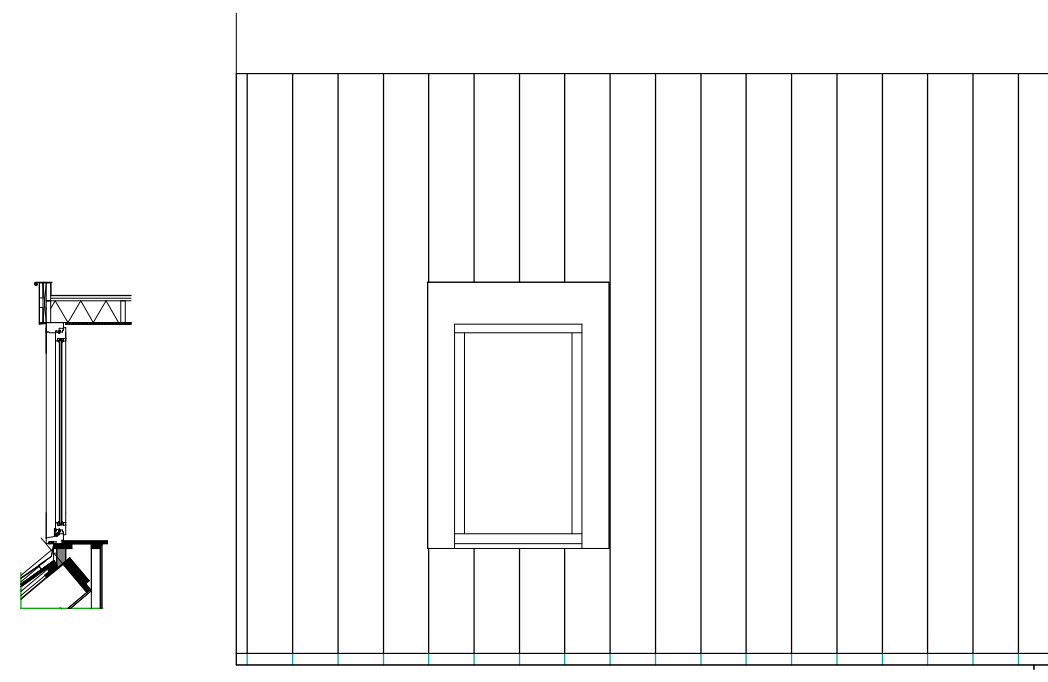
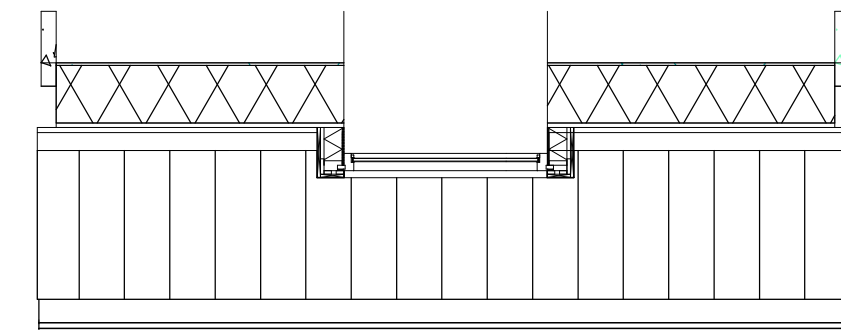
dakkapel bedeaux



dakkapel Humblé



dakkapel WLA



Humblé Martens & Willems Architecten

[www.humblemartenswillems.nl](http://www.humblemartenswillems.nl)

Bedaux de Brouwer Architecten

[www.bedauxdebrouwer.nl](http://www.bedauxdebrouwer.nl)

Weusten Liedenbaum Architecten

[www.weustenliedenbaum.nl](http://www.weustenliedenbaum.nl)

Buitenoord - Wageningen fase 1A Bloknr.: NVT

Werknummer:

18-2019

optionele dakkappen

datum: 13-09-2019

wijziging:

tek.nr.:

BA/VK.017

schaal: 1:50

formaat: A2

getekend: WLA

Trebbe Wonen

Postbus 250  
8000 AG Zwolle

telefoon 088 259 00 00

**TREBBE**  
ONTWIKKELT EN BOUWT

Definitief